



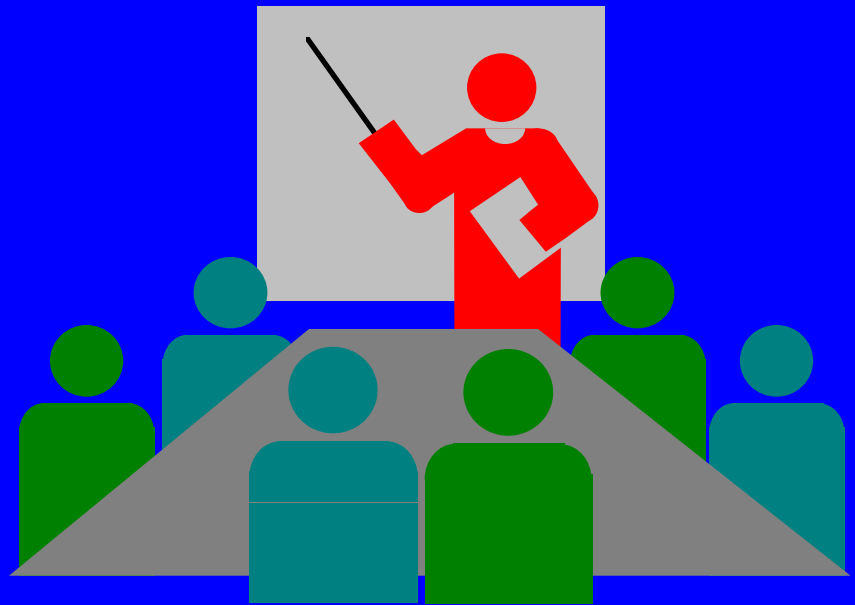
Winter Recreation/ Off-Duty Safety

How to Prevent Mishaps



Risk Management - Five Step Process

- Hazard Identification
- Assess Hazards
- Make Risk Decisions
- Implement Controls
- Supervise/Evaluate



Scenario

In October Navy Family Housing occupants experienced first really cold day. Occupants shifted from a/c to heating system. The next day at 0750, wife's co-worker became concerned when she hadn't arrived at work. Co-worker made several unanswered calls and at 0900, drove to residence. There was no response to knocks despite both cars being in the driveway. At 1200, co-worker called base security, who entered residence with a key. A Sailor and his four dependents died from Carbon Monoxide poisoning.



1. Hazard Identification

Hazards

- Missing Co Alarm
- Faulty Furnace
- Closed Fresh Air Make-up Vents
- Dirty/Clogged Filters
- Air Register Obstructed
- Blocked Chimney Flue
- Fuel Space Heaters



2. Assess Hazards

Hazards

- Faulty Furnace
- Fresh Make-up Air Vent Closed
- Dirty/Clogged Air Filters
- Return Air Vent Obstructed
- Blocked Chimney Flue
- Defective Fuel Space Heaters
- Missing CO Alarm

Severity/Probability

Catastrophic/Likely To Occur

Catastrophic/Likely To Occur

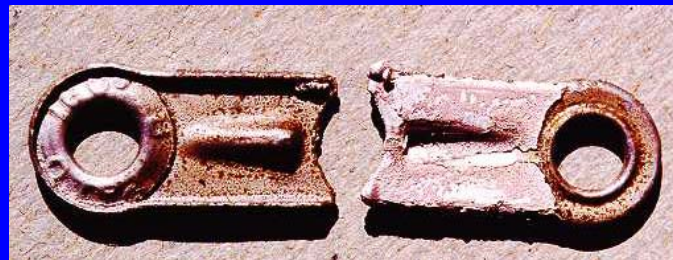
Marginal/May Occur

Marginal/May Occur

Catastrophic/Likely To Occur

Catastrophic/Likely To Occur

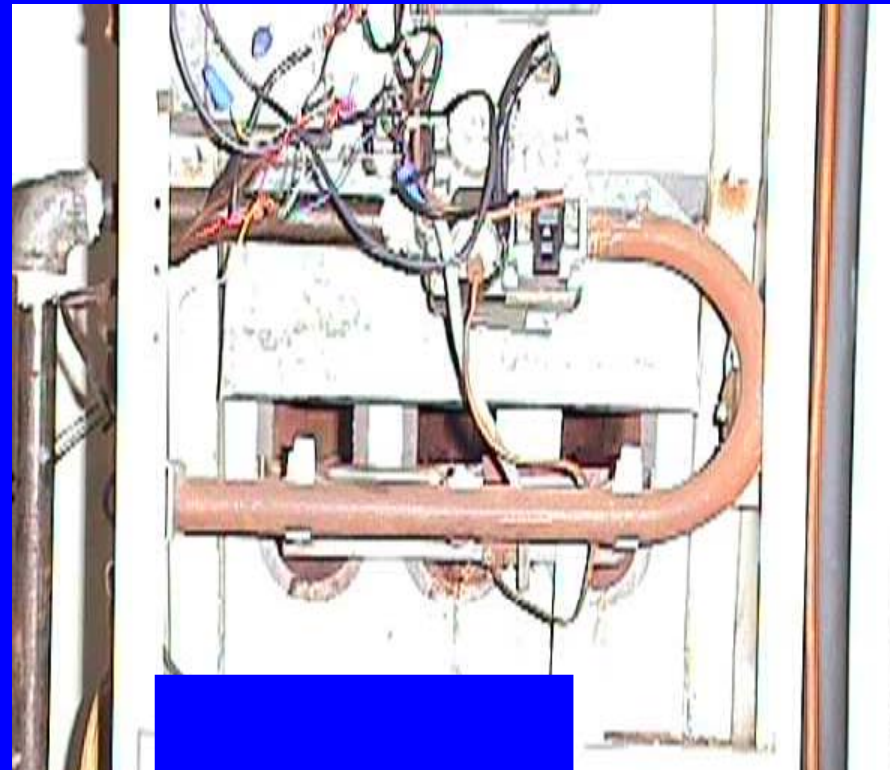
Catastrophic/Likely To Occur



3. Make Risk Decisions

Hazards

- Missing CO Alarm
- Fresh Make-up Air Vent Closed
- Faulty Furnace
- Blocked Chimney Flue
- Defective Fuel Space Heaters
- Dirty/Clogged Air Filters
- Return Air Vent Obstructed



4. Implement Controls

Hazards

- Missing Co Alarm
- Fresh Make-up Air Vent Closed
- Faulty Furnace
- Blocked Chimney Flue
- Fuel Space Heaters
- Dirty/Clogged Air Filters
- Return Air Vent Obstructed

Controls

Install Alarm

Establish Appropriate PM Schedule - QA Work

Disallow Use In Quarters

Change Filters Quarterly (Monthly For Pets)

Keep Furniture Away From Vents



5. Supervise

- Housing inspector verifies alarm operation during occupant check-in/check-out - ensure return air duct not blocked - inform occupants on their responsibility to change air filters
- Implement policy to ensure that CO awareness is publicized prior to and during each heating system
- Annual fire department inspection of housing units to include proper maintenance and operation of CO alarms



Eliminating Falls Around The Home

- Light Stairways
- Non-Skid Backing On Rugs
- Trip Hazards Off Stairways
- Ladders Not Chairs For Reaching Objects



Fire Safety In The Home

- Practice Exit Drills
- Be Attentive When Cooking
- Keep Matches And Lighters Out Of The Reach Of Children
- Don't Overload Electrical Outlets



Fireplace Safety

- Get A Professional Check
- Do Not Use Flammable Liquids On The Fire
- Keep The Damper Open
- Use A Screen
- Make Sure Smoke And Co Alarms Are Working



Kerosene Heater And Coal Stove Safety

- Check With Your Housing Office
- Follow The Owner's Manual Guidelines
- Use Fuel Appliances In Well Ventilated Areas



Christmas Tree Safety

- Check For Freshness
- Place It Away From Fireplaces And Radiators
- Before Mounting, Cut Its Base So It Can Absorb Water
- Check The Water Level Daily



Decorations Need Extra Care

- Approved Lights Only
- Frayed Wires And Broken Bulbs
- Flame-resistant Trimmings
- Going To Bed Or Leaving The House - Lights Off



Keep The Magic In Holiday Parties

- Snacks And Non Alcoholic Drinks
- Large Ashtrays For Smokers
- Provide Rides Home



Hypothermia Kills

Head



Lower
Torso


Under
Arms

Snow Skiing Safety

- Training
- Safety Equipment
- Layers Of Clothing
- Ski Regulations
- Stay On Marked Trails
- Ski Within Your Limits
- Alcohol And Skiing Don't Mix



Snowmobile Safety

- 
- Training
 - Follow Owners Manual Guidelines
 - Safety Helmet With Chin Strap
 - Eye Protection
 - Thin Layers Of Clothing, Boots And Gloves
 - No Alcohol

Skating On Ice Can Be Fatal

- Skate At Commercial Rinks, If Possible
- Use Supervised Areas With Ice Four Inches Thick
- Ensure Rescue Ropes And Ladders Are Available
- Skate With A Friend



Clearing Snow Safely



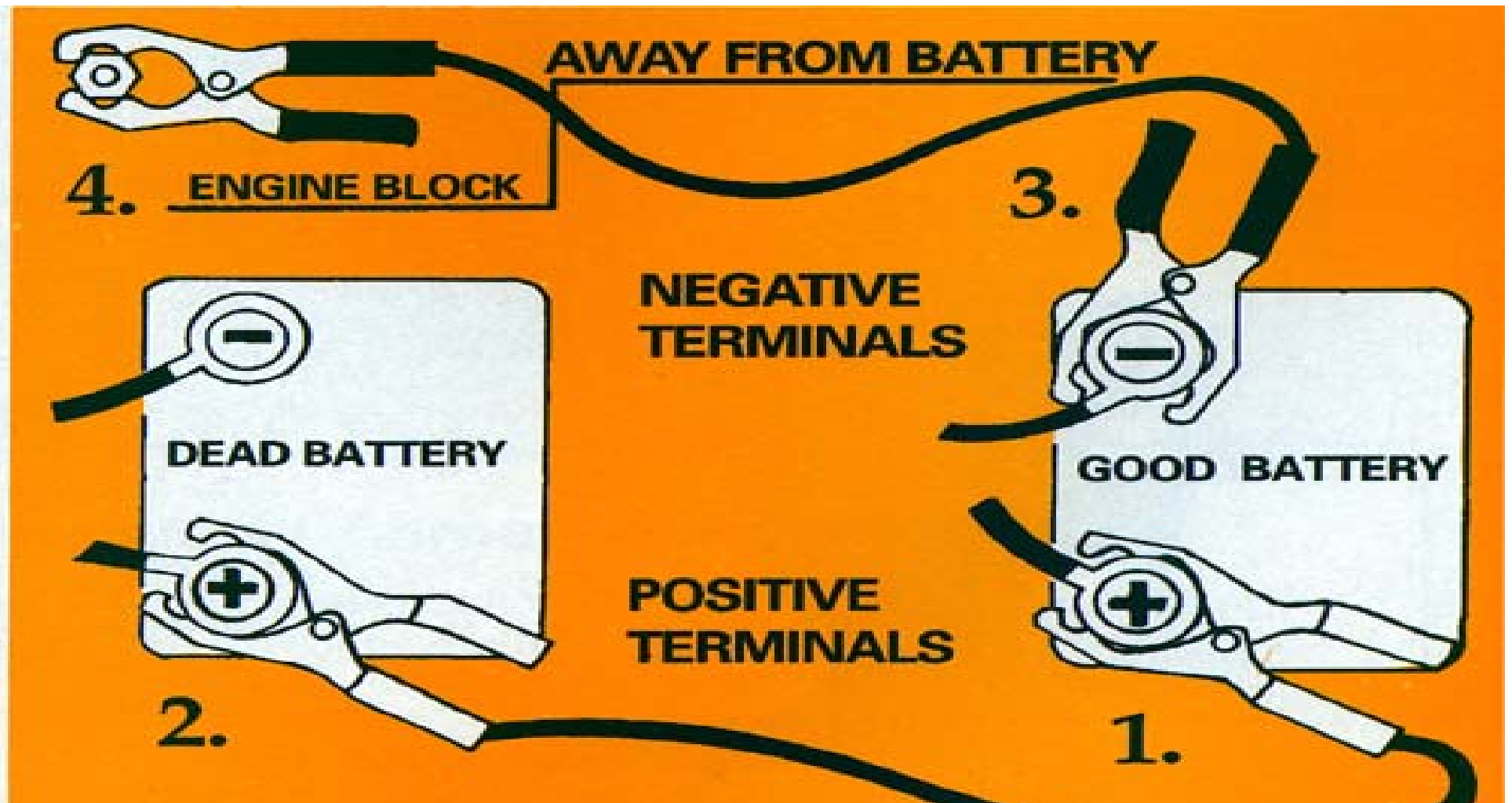
- Use A Snow Shovel With A Long Handle
- Lift With Leg Muscles, Not The Back
- Know Your Limits
- Do Not Smoke Or Drink Alcohol

Chainsaw Safety

- Follow Manufacturer's Recommendations
- Training
- PPE
- Anti-Kickback Devices
- Cut Between Knee And Waist
- Safe Refueling



How To Jump-Start A Vehicle





The End